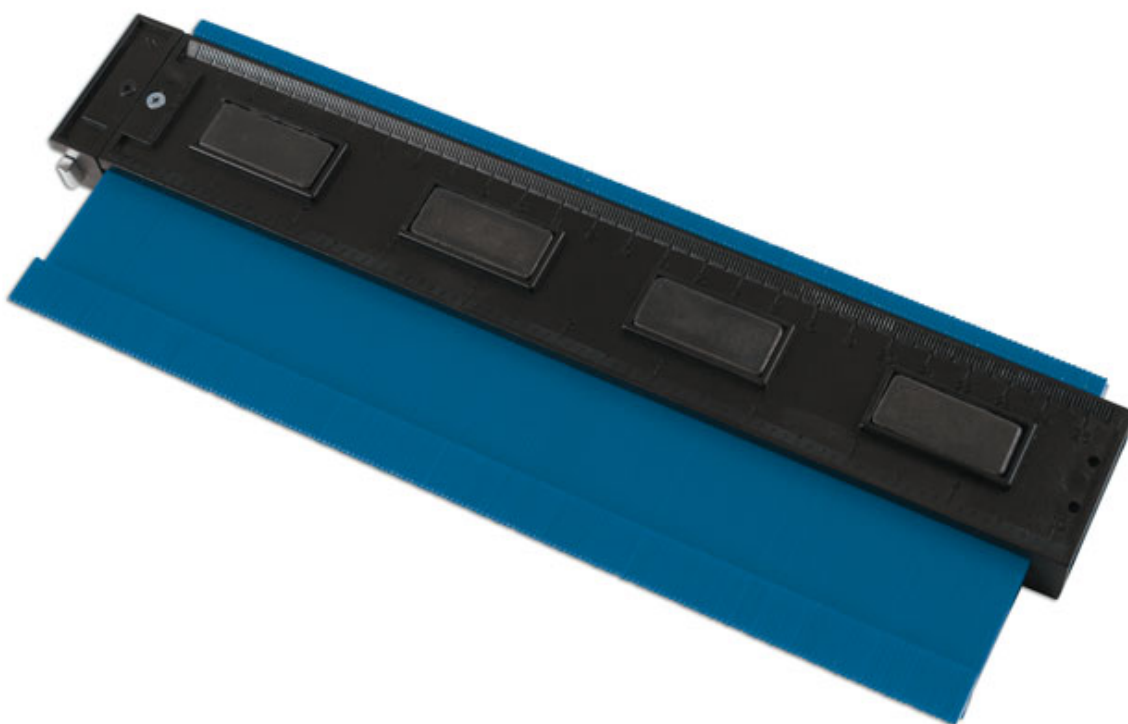


Contour Gauge with Lock

This image profiler is ideal for replicating shapes and contours in preparation for repairing vehicle bodywork, and for marking out tiles, carpets, flooring, timber and metal work before cutting to shape. The gauge features an integral lock allowing the contour to be set in place so that it is not accidentally distorted when being transferred. Suitable for use in bodyshops, workshops, and around the home.



Additional Information

- Used to duplicate, measure & profile shapes & contours. Making it ideal for use when fitting tiles, flooring, & carpet.
- Also suitable for assessing vehicle bodywork damage by comparing contour lines.
- Locking mechanism to ensure contour is maintained.
- Manufactured from ABS plastic to prevent damage to the bodywork. Magnets along one side to hold it in place when marking out the new panel.
- 255mm long with metric & imperial measurements.

<http://lasertools.co.uk/product/7643>

